



KONICA MINOLTA

# bizhub C35

Big on technology. Small in size.

A4 Black & White **30** pages/min  
A4 Full Colour **30** pages/min

small  
biz  
A4 MFP



bizhub C652



bizhub C35

Giving Shape to Ideas

# The small bizhub that changes your office in big ways.



The bizhub C35 is also the suitable size and function for franchises and satellite offices.

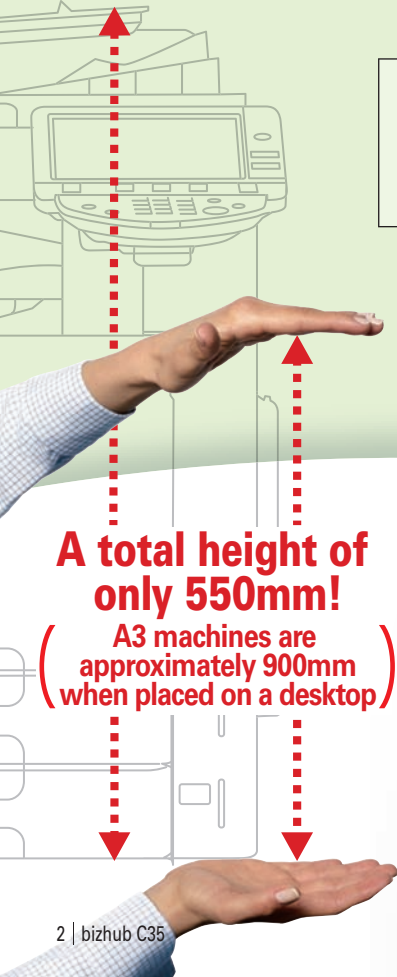
## A compact solution that enhances business efficiency and reduces TCO.

Large offices or offices with multiple rooms often have the inconveniences of having A3 colour MFPs located either far away or in the next room. Introducing the bizhub C35, an A4 colour MFP with the performance and productivity similar to most A3 colour MFPs in a compact A4 printer size. The C35 is just the right size to be placed within arm's reach for enhanced business efficiency. In addition, for office networks that include a black & white MFP and a colour printer, or a colour printer and a fax, the bizhub C35 brings them all together in a single unit. This sort of efficient consolidation helps to reduce TCO (Total Cost of Ownership).

**The solutions of **  
 Document Solutions For The Way You Work

Konica Minolta's Solutions of i include our extensive lineup of MFPs, printers, and software applications, were designed for you, the individual.

<http://www.solutions-of-i.com>



**A total height of only 550mm!**  
 (A3 machines are approximately 900mm when placed on a desktop)



It can even be placed on a desktop!

# bizhub C35

### Standard Features

<b>FAX</b>	<b>RADF*</b>	<b>AUTOMATIC DUPLEX</b>	<b>NETWORK PRINT</b>
<b>COPY</b>	<b>NETWORK SCAN</b>	<b>IPv6</b>	<b>Emperon</b>
<b>UNIVERSAL PRINTER DRIVER</b>	<b>UNIVERSAL DESIGN</b>		

\*Reverse Automatic Document Feeder



## All-in-one design with standard faxing, scanning and duplex printing functions

The bizhub C35 has all the essential features needed as a distributed MFP for large offices. In addition to standard Super G3 faxing, network printing, and network scanning and copying functions, the C35 also provides a host of other standard features including a variety of security functions, RADF (Reverse Automatic Document Feeder), duplex printing, and a 120GB HDD. It is also suitable in size and function as a main machine for franchises and satellite offices.

## Outstanding productivity comparable with our high-end machines

Whether in colour or black & white, the C35 offers high-speed outputs of 30 pages per minute. It also provides 100%<sup>1</sup> productivity for duplex printing. The C35's multi-access feature allows simultaneous scanning and printing for increased efficiency. Furthermore, the 1,350-sheet<sup>2</sup> large-capacity paper supply reduces the downtime needed for paper replacements, and the standard 60~210g/m<sup>2</sup> paper cassette accommodates a large variety of paper weights, even for duplex printing projects.

<sup>1</sup> Excludes mixed colour and black & white documents.

<sup>2</sup> 1,350 sheets max., when using two optional PF-P08 paper cassettes.

## Newly developed ASIC for high quality documents

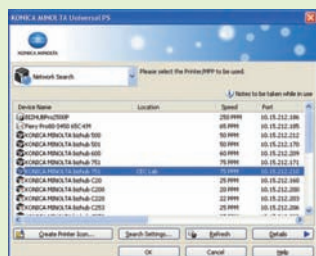
Equipped with a new ASIC (application-specific integrated circuit) which offers the latest image processing algorithms, the bizhub C35 inherits the image enhancement technologies proven on Konica Minolta's A3 MFPs. This represents our ongoing pursuit to provide beautiful business documents and reproduction of characters. In addition, the C35's printer controller is equipped with Konica Minolta's genuine Emperon Print System, which includes PS mode and PCL mode, providing high level outputs that are consistently on par with our high-end machines.

## Universal Printer Driver can be shared with other devices

bizhub C35 is supported by Konica Minolta's state-of-the-art Universal Printer Driver (UPD) allowing it to be shared with other Konica Minolta MFPs and printers from a single interface. With the UPD, you can even print from your laptop PC while away on business at a branch office, or in an office with multiple bizhubs without having to access a new driver. Furthermore, the UPD's basic functions are compatible with a variety of third-party networked MFPs and printers, to minimise the hassle of changing drivers for each brand.

\* The UPD must be downloaded from the Konica Minolta website (free of charge).

\* Applicable functions with the UPD will vary according to device.



## Large 4.3-inch full colour LCD touch-screen display



bizhub C35 is extremely simple to operate with an easy-to-see 32,000-colour high-resolution LCD display, easy-to-use large buttons, and icons that are recognisable at a glance.

## Enhanced integration with high-end bizhub series machines

In addition to centralised management made possible with PageScope Enterprise Suite software, a variety of user authentication systems including IC card authentication\*, external-server authentication and MFP authentication\* are also available to the bizhub C35. Moreover, numerous functions, including reliable security and high-level networking allow seamless operations with our high-end machines. In addition, an easy to see and use control panel and Universal Design make C35 more user-friendly in a variety of ways. With seamless operations, C35 can be used as an extension to your existing office network of A3 MFPs without inconvenience.

\* Optional authentication unit is require.



## The C35's small footprint conserves office floor space\*.

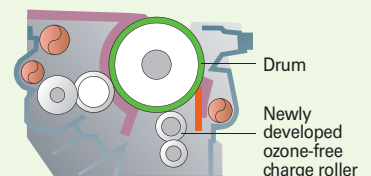
\* Optional Desk (DK-P01) is required for floor set-up



## Environmental Friendly

To lessen the burden on the environment, bizhub C35 uses Simitri HD toner with biomass\*, an advanced version of Simitri toner with biomass\* which Konica Minolta has been producing since 2000 using plant-based resources. In addition, Konica Minolta has newly developed an ozone-free charge roller, reduced the number of parts, and utilised recycled materials. Furthermore, by reducing energy consumption and clearing the new international standard values set by the Energy Star program (Tier 2), the C35 offers both ecology and economy through reduced CO2 emissions.

\*: Biomass is a renewable organic resource made up of biological materials and excludes fossil fuels.





## bizhub C35 Functions

### Copy Functions

•Text, Photo, Text/Photo modes •Auto density adjustment •Auto paper selection (Original must be specified) •Auto zoom selection (Original must be specified) •Mixed originals (Letter and Legal only)  
 •Image rotation •Program registration (up to 15) •2-in-/4-in-1 copy •Interrupt mode •Slightly reduced copy  
 •Margin setting (position/size) •Card Shot •Separate Scan

### Print Functions

•Document, Photo, DTP, Web, CAD modes •Edge Enhancement •Poster mode (2x2, 3x3, 4x4 PS only)  
 •N-in-1, N x N 2/4/6/9/16 in 1 (2x2, 3x3, 4x4 PCL only) •Booklet •Multiple protocol compatibility •Stamp (Watermark)  
 •Overlay •Cover sheet •180° rotation •Blank page control (PCL only) •Margin setting (position/size)  
 •Print status notification (Application) •PDF/TIFF/JPEG/XPS Direct Print •USB Direct Print  
 •ICC profiles download •Toner Save Mode •My Tab •Black Overprint •Auto Trapping •PPML-Variable Data Printing  
 •Support for new function in latest PDF version 1.7 •Save in HDD

### Copy/Print Functions

•Multi-job •Duplex copy/print •Enlarge/reduce/zoom •Sort •Group •Auto tray switch •Proof copy/print

### Scanning Functions

•Auto Colour Selection •Mixed original scanning (Letter and Legal only) •Separate Scan •Multi-Method Send (with restrictions)  
 •Scan to E-mail •E-mail subject/E-mail body text •Scan to SMB •Scan to FTP •E-mail notification of Scan to SMB/FTP URL  
 •Scan to WebDAV •Scan to USB •TWAIN Scan (Raw mode only) •Windows WIA Scan •WS-Scan •Compact PDF •File type (TIFF/PDF/JPEG/XPS) •Save in HDD

### Fax Functions

•G3 Fax •Text, Photo, Text/Photo modes •2-sided transmission •Memory transmission •Timer transmission  
 •Memory RX (print as needed) •Memory reception (save when printing fails) •Fax forwarding (Temporary Forward Transmission not supported)  
 •Polling reception •Sequential multiple station transmission •F-code •ECM OFF •V34 OFF •Transmission report •Internet Fax (Simple mode only)  
 •PC Fax •Cover sheet (PC Fax) •Acquiring address information from MFP (PC Fax)

### Scanning/Fax Functions

•One-touch registration (up to 2,000) •Program transmission (up to 400) •LDAP search (One registered server only)

### Security & Management Functions

•Built-in Authentication •Non-Contact IC Card Authentication (Optional authentication unit is required)  
 •ID & Print (Optional authentication unit is required) •External Server Authentication •NDS authentication over TCP/IP  
 •Department management (Account Name, Password) (PageScope Web Connection only)  
 •Secure Print (Win/Mac OS X only) •Copy Protect (PC print) (PCL only)  
 •Scan to E-mail SMTP authentication, POP3 before SMTP •SMTP over SSL/Start TLS •Encrypted PDF  
 •S/MIME •IEEE 802.1X support •IP Filtering •SSL/TLS Protocol •Overwrite all data in the HDD •HDD data encryption  
 •Confidential transmission •Password transmission/reception (F-code) •Automatic fax destination verification and transmission (CSI: Called Subscriber ID) •Fax number confirmation •ISO15408

### Other Functions

•Help •Status Notifier •B/W Printing When Colour Toner Runs Out •IPv6 Protocol •DPWS supported (Windows Vista)  
 •CPU (800MHz) •HDD (120GB) •Emperon •Interface: Ethernet (1000Base-T/100Base-TX/10Base-T), USB 2.0, USB Host •bEST •LCD (Colour 96.7 x 55.5mm)  
 •Maximum total capacity (1,350 sheets) •Paper capacity: 1st tray (250 sheets) •2nd tray (Optional) •Multiple Bypass Tray (100 sheets)  
 •Multiple Bypass Tray paper weight support (210g/m<sup>2</sup>) •Auto Duplex

## bizhub C35 General Specifications

Type	Desk top Full-Colour Printer/Copier/Scanner	
Colour Support	Full-Colour	
Copy Resolution	Scan	600dpi x 600dpi
	Print	600dpi x 600dpi
Gradation	256 colour shades per pixel (8-bit)	
Memory Capacity	1.5GB (Std/Max)	
HDD	120GB (shared print, copy, scan and fax)	
Original Type	Sheets, Books, Objects	
Max. Original Size	Max. A4 or 8.5" x 14"	
Output Size	Tray 1 (Standard) (Multiple Bypass Tray)	A4, A5, B5, A6, B6, 16K 4" x 6", 5.5" x 8.5", 8.5" x 11", 8.5" x 14"
	Tray 2 (First Cassette) (Standard) (Universal Tray)	A4, A5, B5, A6, B6, 16K 4" x 6", 5.5" x 8.5", 8.5" x 11", 8.5" x 14"
	Tray 3 and 4 (Second and Third Cassette) (Optional) (Universal Tray)	A4, B5 8.5" x 11", 8.5" x 14"
Image Loss	Copy	Max. 4.0mm for Top/bottom/right/left edge
	Print	Max. 4.2mm for Top/bottom/right/left edge
Warm-Up Time (23°C, std. voltage)	45 sec. or less (May vary depending on the operating environment and usage.)	
First Copy Time <sup>1</sup>	Colour	12.0 sec.
	B/W	10.1 sec.
Copy Speed	Colour	A4: 30 ppm
	B/W	A4: 30 ppm
Copy Magnification	Fixed Same Magnification	1:1-1.0% or less
	Scaling Up	1:1.154 / 1.224 / 1.294 / 1.414 / 1.545 / 1.631 / 2.000
	Scaling Down	1:0.866 / 0.816 / 0.785 / 0.707 / 0.647 / 0.607 / 0.500
	Pre-set	3 types
Zoom	Flatbed	25 to 400%, 0.1% increments
	ADF	25 to 200%, 0.1% increments
Paper Capacity (80g/m <sup>2</sup> paper)	Standard	100-sheet multiple bypass tray, 250-sheet universal tray
	Max.	1,350 sheets (total, with options)
Paper Weight	60-210 g/m <sup>2</sup>	
Multiple Copy	1-999 sheets	
Power Requirements	220-240V (50-60Hz)	
Max. Power Consumption	1.3kW or less	
Dimensions [W] x [D] x [H]	555mm x 508mm x 550mm (21-3/4" x 20" x 21-3/4")	
Weight	39kg (86lb)	
Space Requirements [W] x [D]	1,068mm x 954mm (42" x 37-1/2")	

<sup>1</sup>A4/full size/using the first tray/scanning from the original glass surface.

## Scanning Specifications (Standard)

Type	Full-Colour Scanner	
Interface	Ethernet (10Base-T/100Base-TX/1000Base-T), USB Host	
Driver	Network TWAIN Driver, WIA (I.0.2.0) Driver (for Windows only)	
Protocol	TCP/IP (FTP, SMB, SMTP, WebDAV, WS-Scan)	
Scanning Speed (300dpi)	B&W/Colour	A4: 30/30ppm
Scanning Size	Flatbed Scan	Max. A4/Legal
	ADF Scan	Max. 215.9 x 1,000mm (Only fax is possible for sizes exceeding 355.6mm in length)
Output Format (Single Page/Multi-Page)	TIFF, PDF, Compact PDF, Encrypted PDF, JPEG*, XPS Page Setting	
Scanning Resolution	150dpi x 150dpi, 200dpi x 200dpi, 300dpi x 300dpi, 600dpi x 600dpi (Network TWAIN: 150dpi, 300dpi, 600dpi, 1200dpi, 2400dpi, 4800dpi)	
Main Function	Scan to E-mail, Scan to FTP, Scan to SMB, Scan to HDD, Scan to WebDAV, Scan to USB, WS-Scan, Windows WIA Scan	

\*JPEG is single page only.

## Fax Specifications (Standard)

Communication	Super G3	
Compatible Lines	Public Switch Telephone Network, PBX	
Line Density	Std.	200 x 100dpi (8 dot/mm x 3.85 line/mm)
	Fine	200 x 200dpi (8 dot/mm x 7.7 line/mm)
	Super Fine	400 x 400dpi (16 dot/mm x 15.4 line/mm)
Modem Speed	2.4 to 33.6kbps	
Compression	MH/MR/MMR/JBIG	
Sending Paper Size	Flatbed Scan	Max. A4/Legal
	ADF Scan	Max. 215.9 x 1,000mm (STD/Fine/Super Fine)
Recording Paper Size	Max. A4/Legal Long Length Record Max. 1,000mm - following the page division	
Transmission Speed	Less than 3 sec. (A4, V34, 33.6kbps, JBIG)	
Scanning Speed	A4: 30ppm <sup>1</sup>	
Number of Abbr. Dials	2,000 <sup>2</sup>	
Number of Program Dials	400 <sup>2</sup>	
Number of Group Dials	100 <sup>2</sup>	
Sequential Multiple Station Transmission	500	

<sup>1</sup>Excluding Super Fine. <sup>2</sup>Maximum values include Scan to XX.

## Printer Specifications (Standard)

Type	Embedded	
CPU	MV78100 (800MHz)	
Memory	Shared with the copier	
Print Speed	Same as Copy Speed (when using the same original)	
HDD	120 GB (Shared with the copier)	
Print Resolution	600dpi x 600dpi	
PDL	PostScript3 Emulation, PCL5e/c/PCL6, XPS PDF Direct Printing, JPEG/TIFF/XPS Direct Print	
Protocol	TCP/IP, EtherTalk, IPX/SPX, UPD, IPv6	
Support OS	PCL6	Windows 2000, Windows XP/XP 64bit, Windows Server 2003/Server 2003 64bit, Windows Vista/Vista 64bit, Windows Server 2008/Server 2008 64bit, Windows 7 (Not certified by WHQL)
	PS3	Windows 2000, Windows XP/XP 64bit, Windows Server 2003/Server 2003 64bit, Windows Vista/Vista 64bit, Windows Server 2008/Server 2008 64bit, Mac OS X (10.2.8/10.3.9/10.4/10.5), LINUX, Windows 7 (Not certified by WHQL)
	XPS	Windows Vista, Windows Server 2008, Windows 7 (Not certified by WHQL)
Fonts	PCL	80 fonts
	PS	137 fonts
Interface	Ethernet (10Base-T/100Base-TX/1000Base-T), USB 2.0 (High Speed)	

**Product appearance, configuration and/or specifications are subject to change without notice.**



KONICA MINOLTA, the KONICA MINOLTA logo and symbol mark, and "Giving Shape to Ideas" are registered trademarks or trademarks of KONICA MINOLTA HOLDINGS, INC. bizhub, bizhub PRO, bizhub PRESS, Magicolor, PagePro, PageScope, Simitri, Simitri HD, Simitri HD+, Simitri with Biomass, Emperon, S.E.A.D., S.E.A.D.II, Printgroove and Konica Minolta Optimised Print Services and their respective logos are registered trademarks or trademarks of KONICA MINOLTA BUSINESS TECHNOLOGIES, INC.

All other brands and product names are registered trademarks or trademarks of their respective companies or organisations.



KONICA MINOLTA  
OPTIMISED  
PRINT SERVICES™

From consulting, system design, to operations, Konica Minolta offers total support to optimise your office output environment.

<http://www.biz.konicaminolta.com/services/ops>

### Requirements for safe use

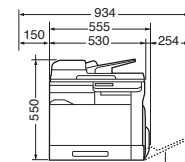
- Please read and follow the instruction manual to ensure safe operation.
- Only operate using appropriate power supply and voltage.
- Connecting the earth wire to an inappropriate place may cause explosion or electric shock. Please connect accordingly (Taiwan and the Philippines only).

## KONICA MINOLTA BUSINESS TECHNOLOGIES, INC.

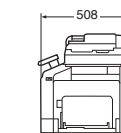
1-6-1 Marunouchi Chiyoda-ku, Tokyo, Japan  
<http://www.biz.konicaminolta.com>

## Dimensions

### Working Table WT-P01



Multiple Bypass Tray opened



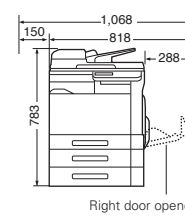
Maximum (with the control panel in the centre position)

### Paper Feed Unit PF-P08

Equipped with a paper drawer that supplies 500 sheets.

\* A maximum of two optional PF-P08 paper feed units may be added.

### Desk DK-P01



Right door opened

